

Table of Contents

Table of Contents.....	1
License Agreement.....	2
Trademarks and Copyright.....	3
About This Installation Manual.....	4
Organization.....	4
Conventions.....	4
System Requirements.....	5
Installing PIDE2.....	6
Installing Orion Database Engine.....	11
Installing PPL2 Base Edition	14
Installing Swril Game Engine.....	18
Installing Windows Mobile SDK.....	22
Setting Up PIDE2 For First Time.....	25
Supported File Types in Code Editor.....	27
Uninstalling PIDE2.....	29

License Agreement

This document and its contents are furnished "as is" for informational purposes only, and are subject to change without notice. ArianeSoft does not represent or warrant that any product or business plans expressed or implied will be fulfilled in any way. Any actions taken by the user of this document in response to the document or its contents will be solely at the risk of the user.

ARIANESOFTE MAKES NO WARRANTIES, EXPRESSED OR IMPLIED, WITH RESPECT TO THIS DOCUMENT OR ITS CONTENTS, AND HEREBY EXPRESSLY DISCLAIMS ANY AND ALL IMPLIED WARRANTIES OF MERCHANTABILITY, FITNESS FOR A PARTICULAR USE OR NON-INFRINGEMENT. IN NO EVENT SHALL PROOFHQ BE HELD LIABLE FOR ANY DIRECT, INDIRECT, SPECIAL OR CONSEQUENTIAL DAMAGES IN CONNECTION WITH OR ARISING FROM THE USE OF ANY PORTION OF THE INFORMATION.

Copyright © 2008 by ArianeSoft . All rights reserved.

This document may not be reproduced, photocopied, displayed, transmitted or otherwise copied, in whole or in part, in any form or by any means now known or later developed, such as electronic, optical or mechanical means, without the written agreement of ArianeSoft . Any unauthorized use may be a violation of domestic or international law.

Trademarks and Copyright

ArianeSoft , Pocket Programming Language, and the ArianeSoft logo are trademarks of ArianeSoft .

All other product or company names mentioned are used for identification purposes only, and may be trademarks of their respective owner.

About This Installation Manual

This manual will provide all the information you need to install, un-install as well as to get started with PIDE.

Organization

This installation manual is organized accordingly:

- Installation of the CleverUpdate,
- Installation of Individual products through CleverUpdate
- PIDE2 – The first time
- Un-installation of PIDE2

To find what you are looking for quickly, refer to the table of contents and search for a topic based upon a menu item.

Conventions

This guide uses the following conventions to highlight certain words and phrases that differentiate their meaning visually.

Table 1: Conventions used in this guide

This style...	Indicates	For example:
<i>italics</i>	Notes regarding special information about a feature	<i>Note: You can also...</i>
bold	A feature of the interface or functionality within PIDE	To open the project, click on the Open button.

System Requirements

PIDE has the following system requirements:

- Windows 2000, Windows XP, Windows Vista compatible computer
- 512mb RAM
- 32mb disk space
- Internet connection

Installing PIDE2

Installation of PIDE2 is as simple and easy as any other application available for Microsoft Windows operating system. Just by following some simple to understand instructions, users will be able to install PIDE2 on their system with ease.

Before you can start with the installation of PIDE2 you will have to download the necessary setup file that allows a user to install PIDE2 on the system.

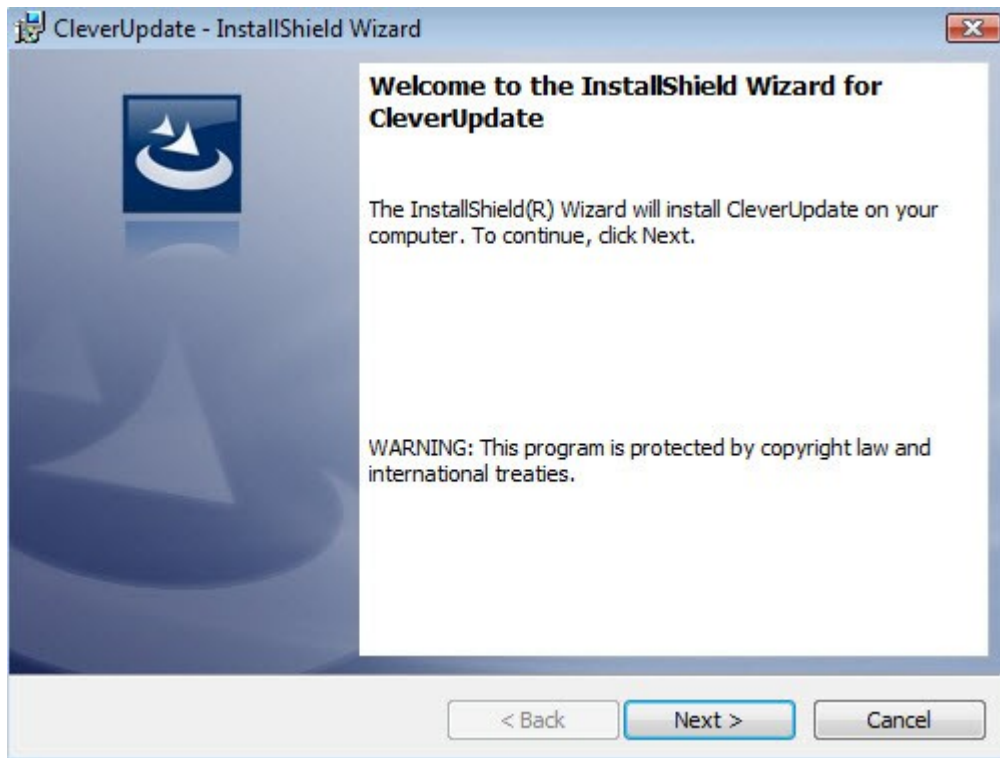
NOTE: Users can download CleverUpdate.exe by following the link given in the conformation email sent after successful registration of PIDE2. CleverUpdate is a useful yet very powerful update utility that allows a user to get the necessary files required to maintain an up-to-date copy of PIDE2.

Once downloaded, double click the CleverUpdate.exe file to run the CleverUpdate setup that would lead you to install PIDE2. Given below are the guidelines required to complete the execution of CleverUpdate setup:

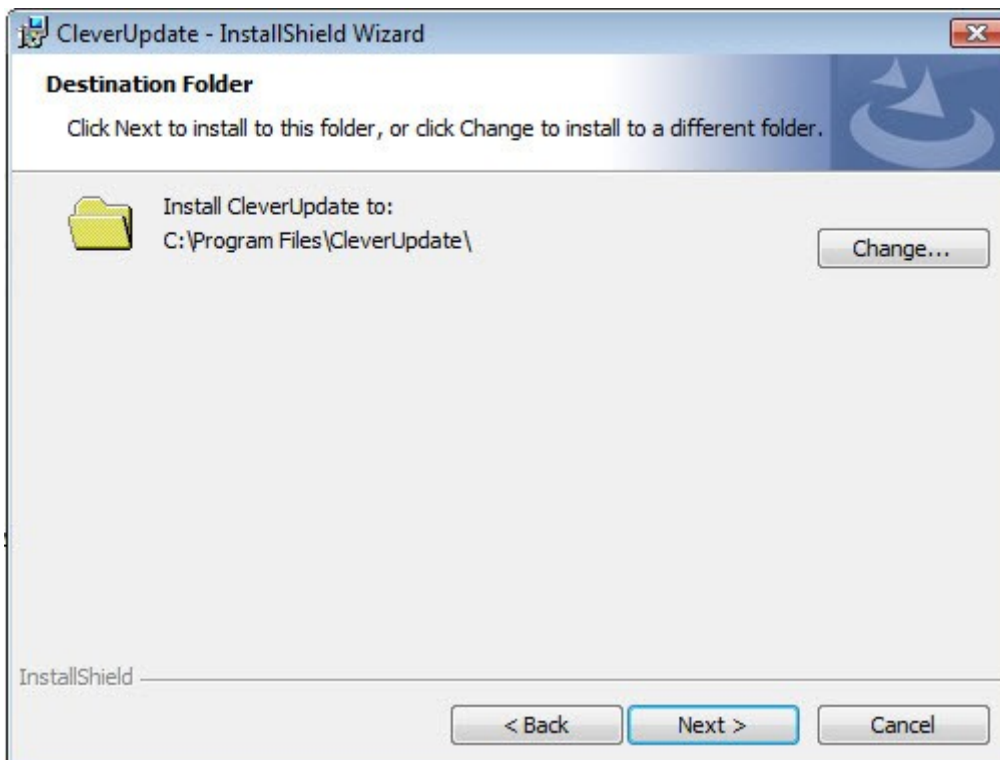
- Wait for the InstallShield Wizard to prepare the files required for the installation procedure.

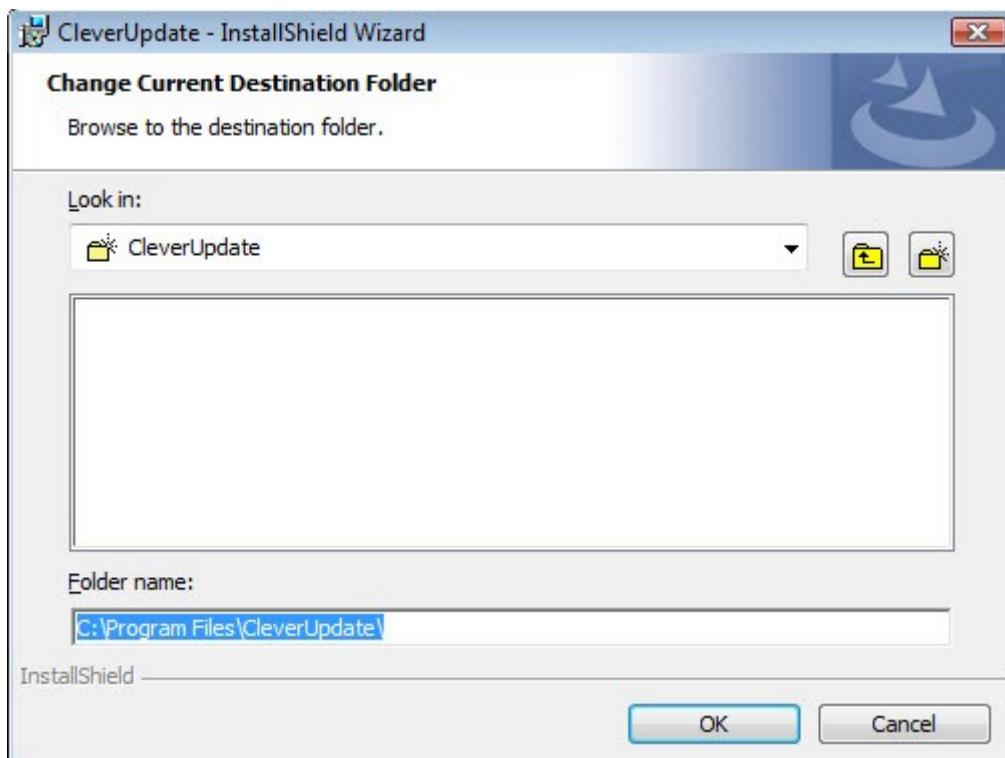


- In the CleverUpdate Installation welcome window, click the **Next** button to continue with the installation process.

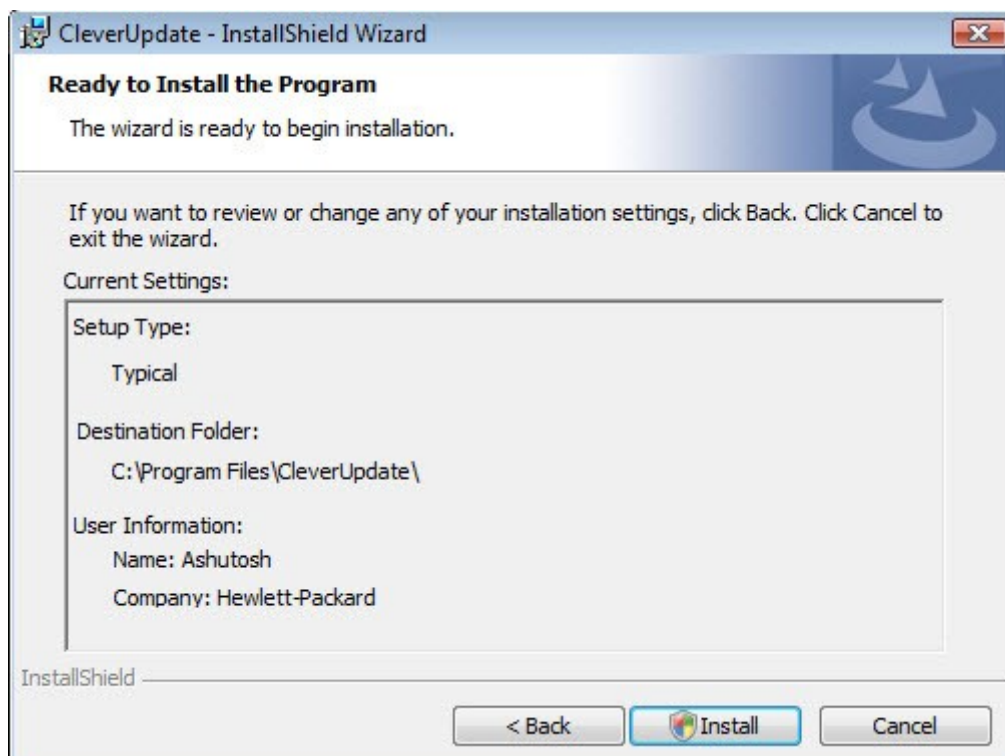


- In the destination folder window, choose a directory where you would like to install CleverUpdate files by clicking the **Change** button and click the **Next** button to continue. If you do not wish to change the default setting of c:\Program Files\CleverUpdate\, just click the **Next** button without performing any changes.

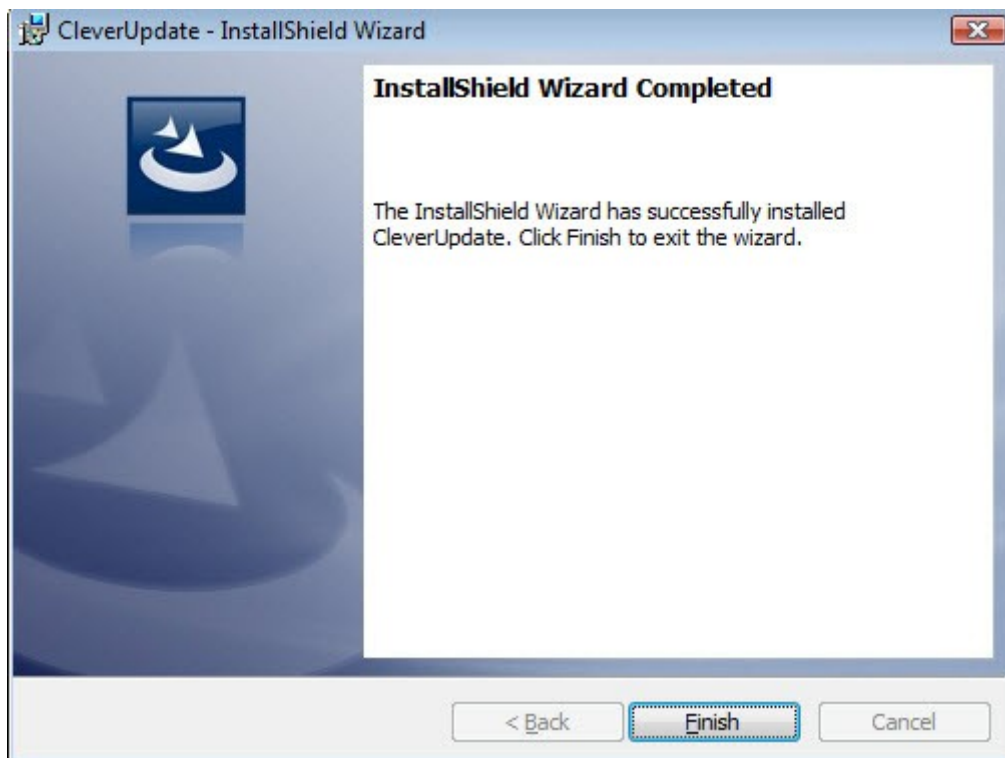




- The final step of CleverUpdate Installation alerts a user about the information of CleverUpdate install. Click the **Install** button to install CleverUpdate package.

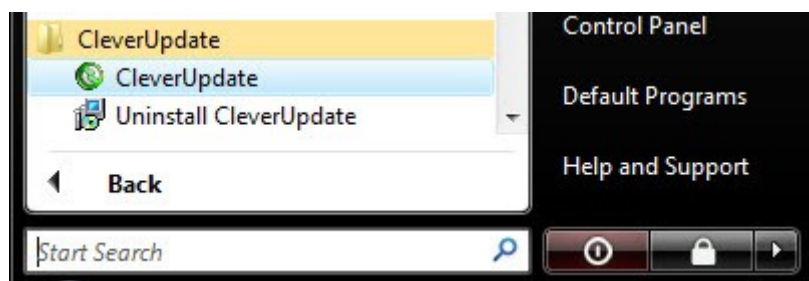


- After the InstallShield wizard installs all the required files on the system, you will be notified that the process has been completed through the InstallShield wizard completed window. End the installation process by clicking the **Finish** button.

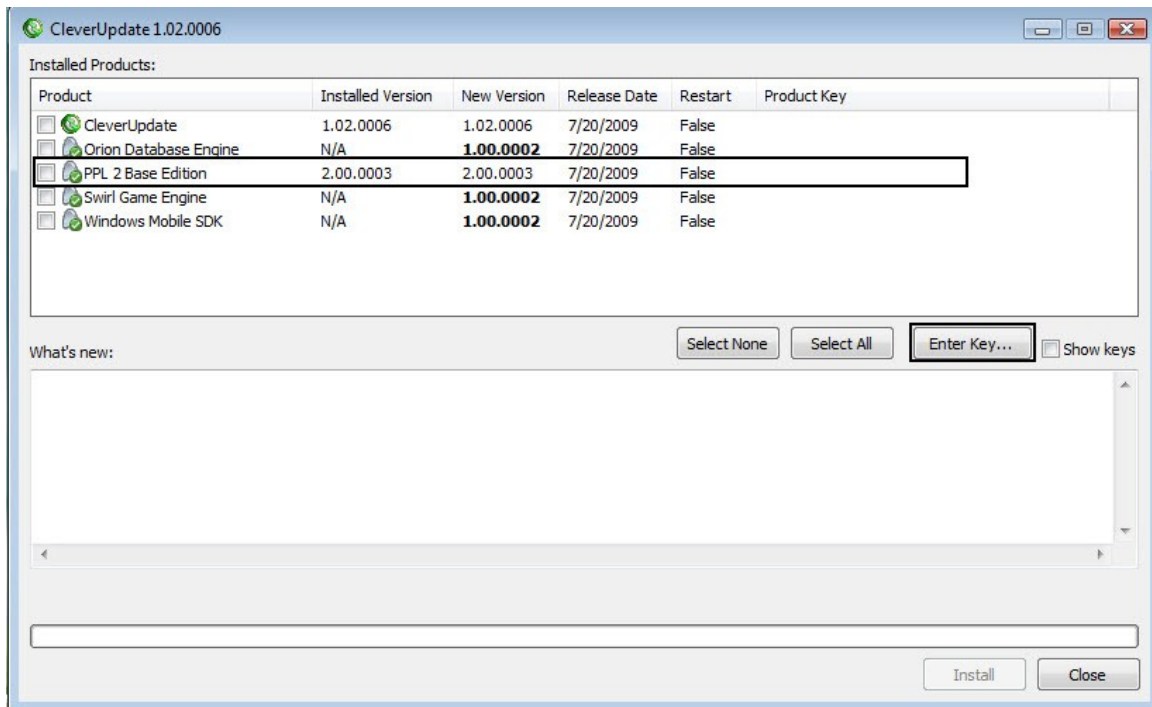


After the complete installation of CleverUpdate, PIDE installation can be commenced. With CleverUpdate we would be able to install PIDE2 directly to our system and enjoy a better, complex and yet easier visual programming environment. Follow the given guidelines for installing PIDE2 on your system:

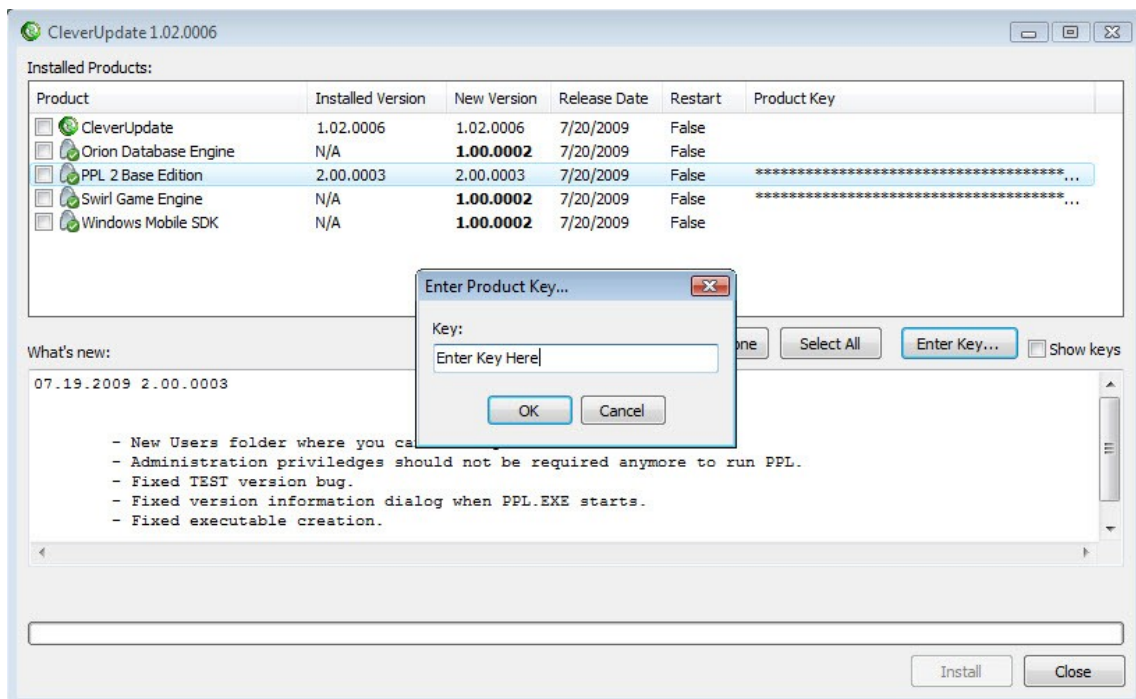
- Start the CleverUpdate application to start PIDE installation.



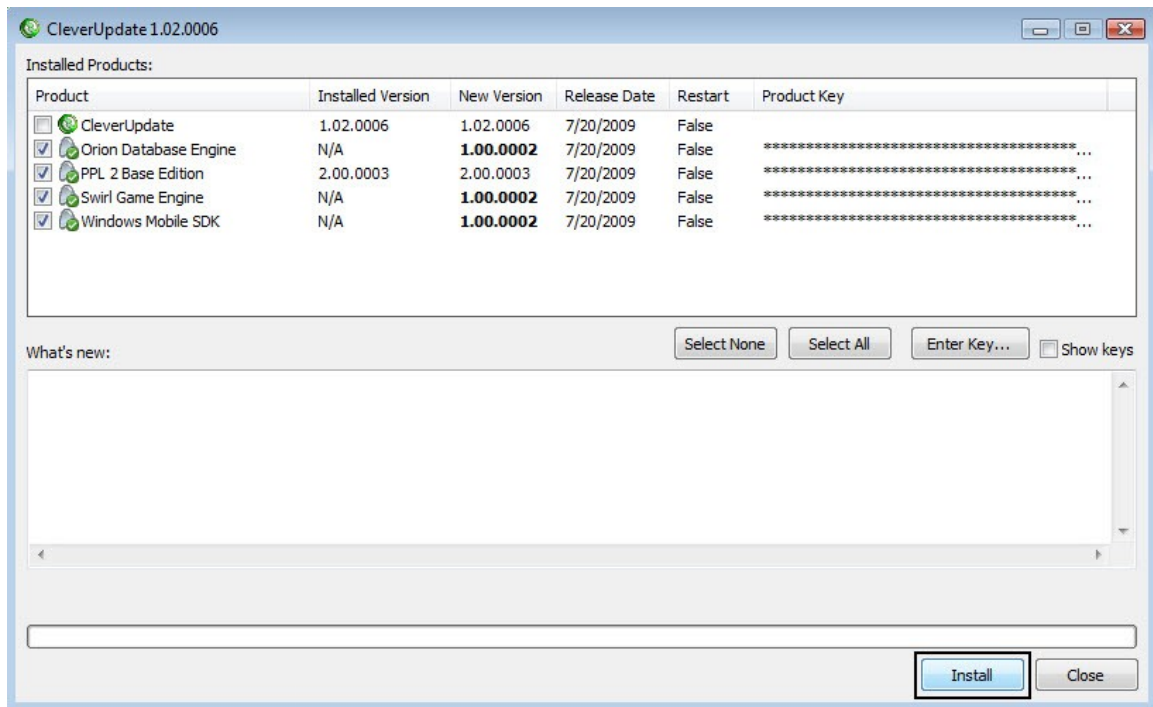
- In CleverUpdate, select the individual PPL products you want to install and enter their registration numbers by clicking the **Enter Key...** button.



- Once you have entered the registration key in the Key text box of **Enter Product Key...** window, hit the **OK** button.



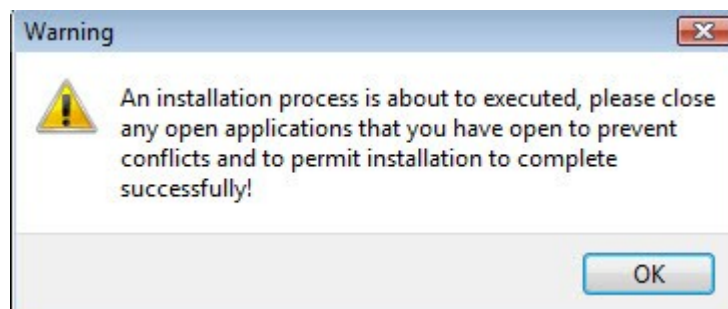
- Click on the **Check Boxes** besides each product to specify the product to install and hit the **Install** button to start the installation.



The installation will start and the product will be downloaded from the internet by CleverUpdate itself. After a product is downloaded by CleverUpdate, it is installed using the InstallShield wizard. Given below are the steps to install the individual components of PIDE:

Installing Orion Database Engine

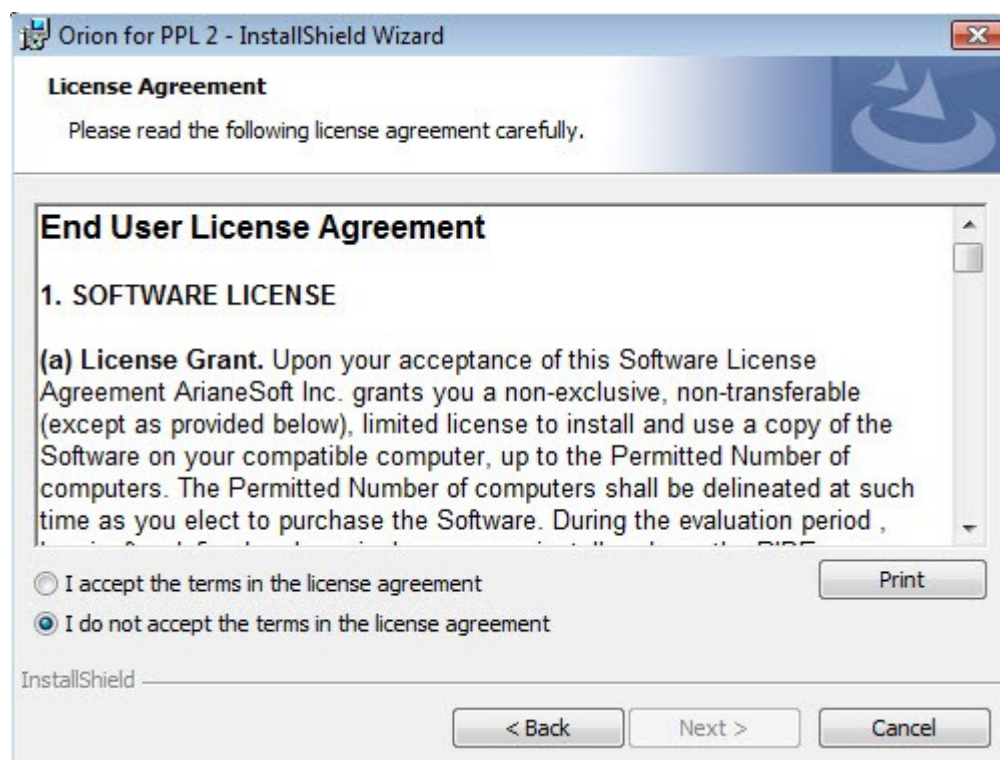
- After Orion Database Engine is downloaded, system alerts the user about the initiation of installation procedure and gives a warning to close all the applications that relate to the install. Close any application that may belong to PIDE and click the **OK** button.



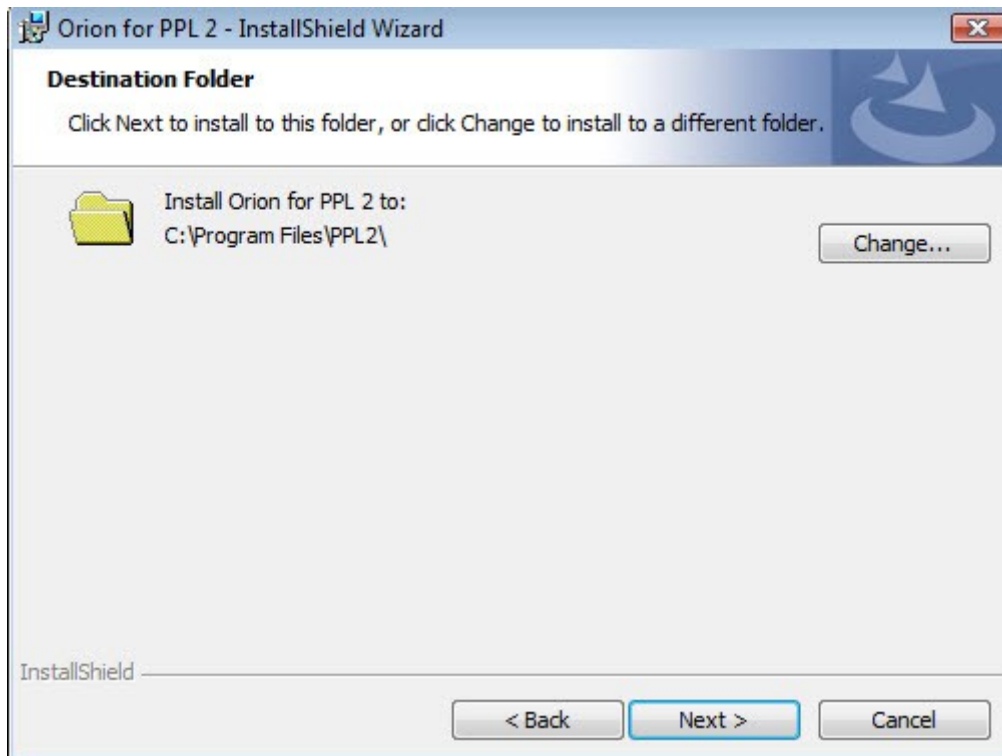
- In the welcome window for installing Orion for PPL2, click the **Next** button to continue the procedure.



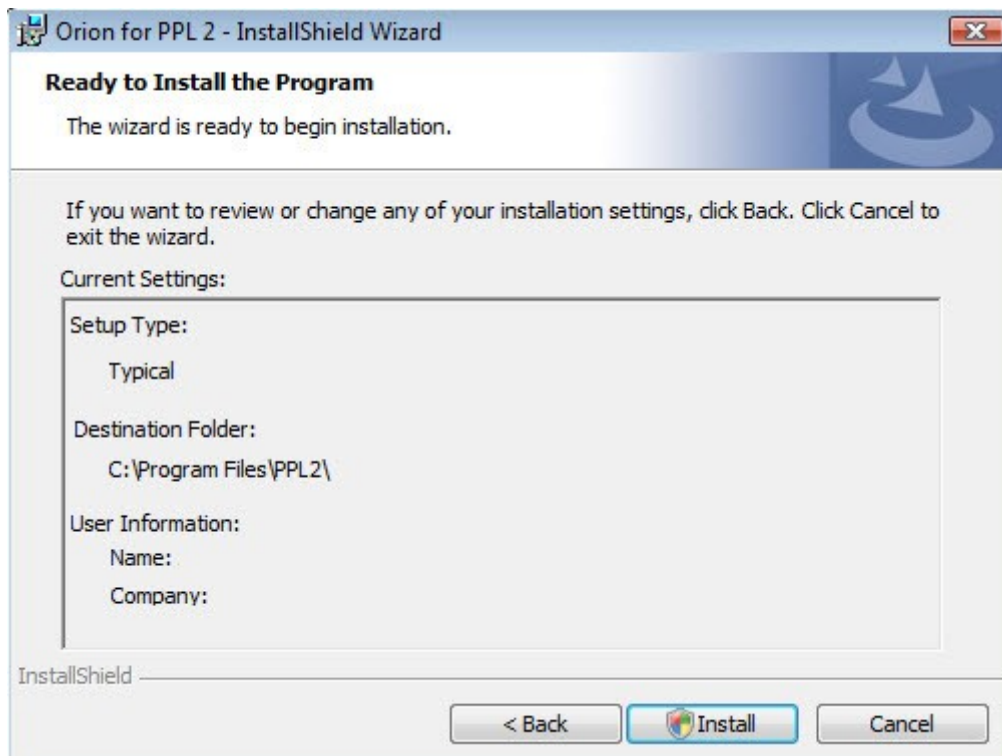
- Accept the EULA by clicking the “I accept...” radio button and click the **Next** button to go to the destination folder window.



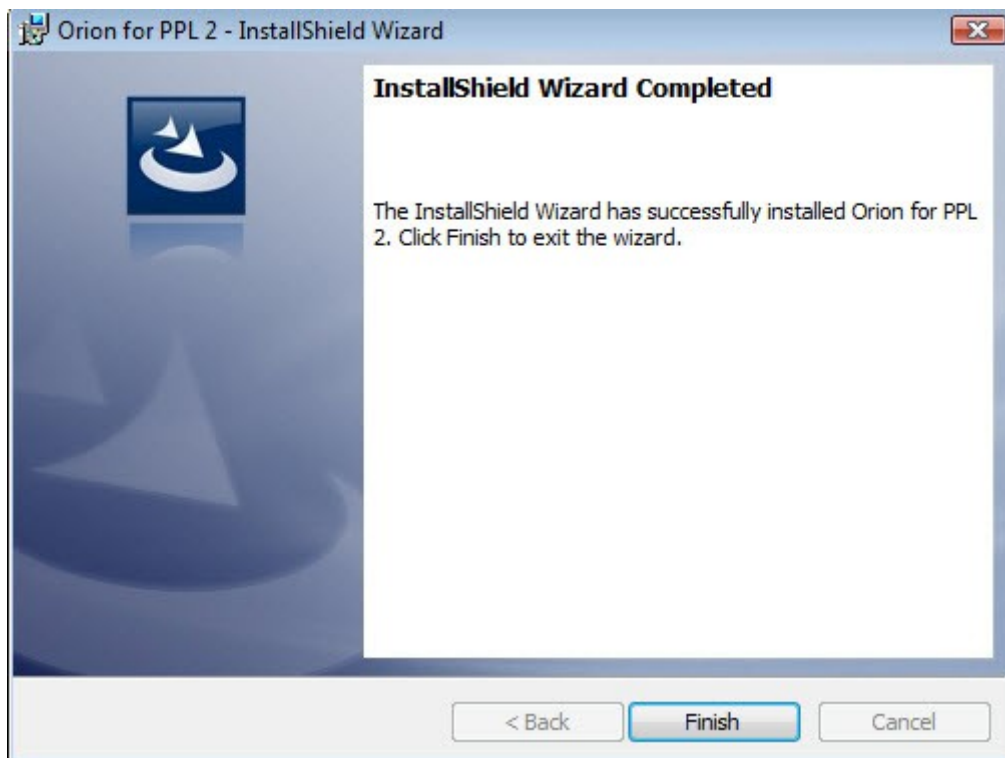
- Click **Next** button to select the default installation directory or click the **Change** button to change the installation directory.



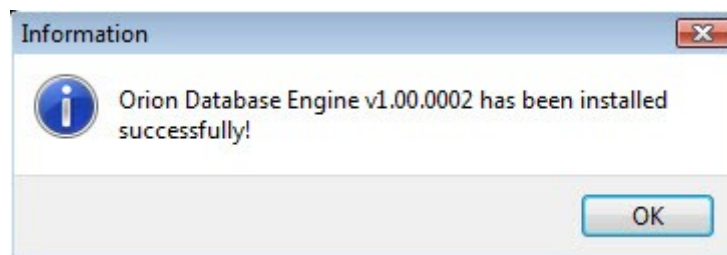
- In the Ready to install window, click the **Install** button after reading all the install related information of Orion for PPL2.



- After the installation is complete, hit **Finish** button to complete the installation.



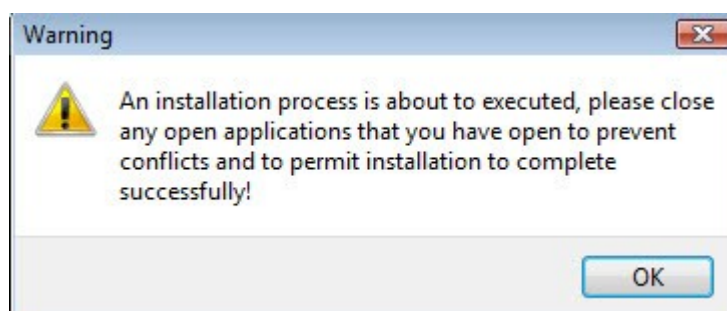
- As the installation is complete, the system will automatically alert you about the successful completion of Orion Database Engine.



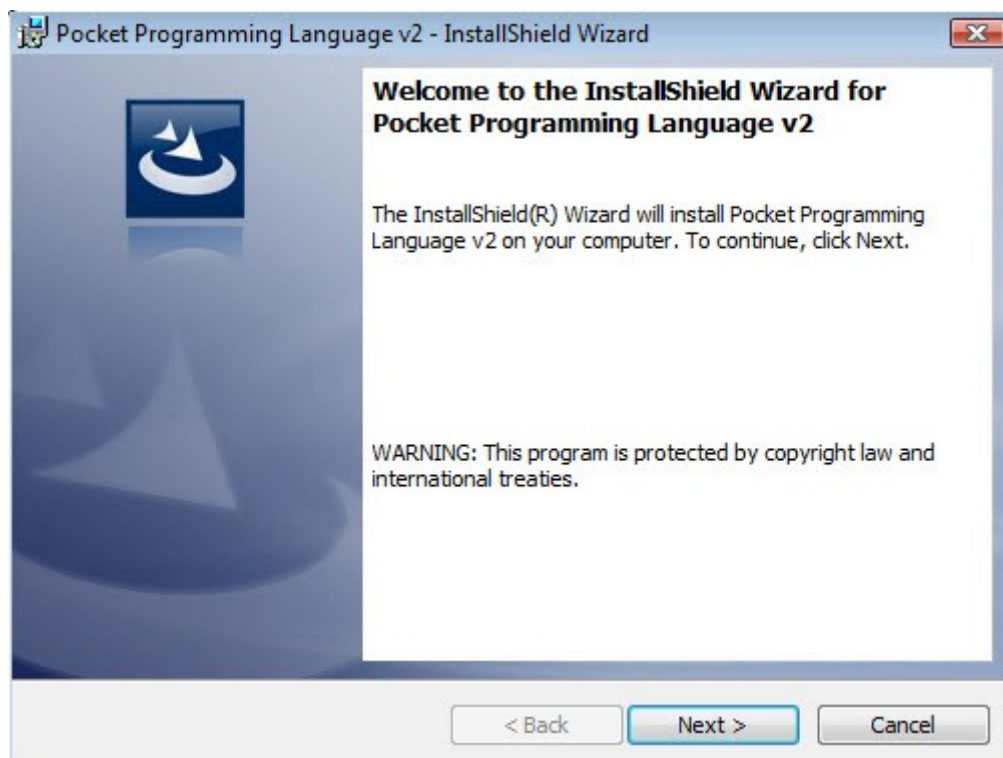
After the installation of Orion Database Engine, CleverUpdate will automatically leap to the next product, if any.

Installing PPL2 Base Edition

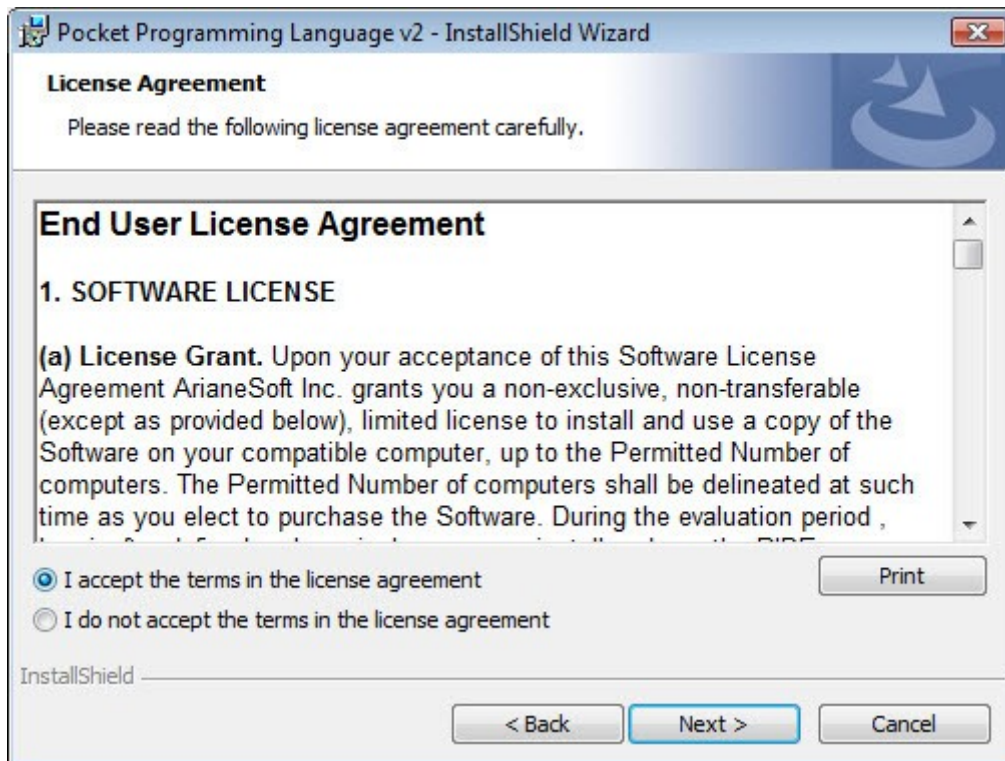
- After downloading the PPL2 Base edition, system will show a warning to close all the applications present that may lead to installation conflict with PPL2 installation. Close the applications and click the **OK** button.



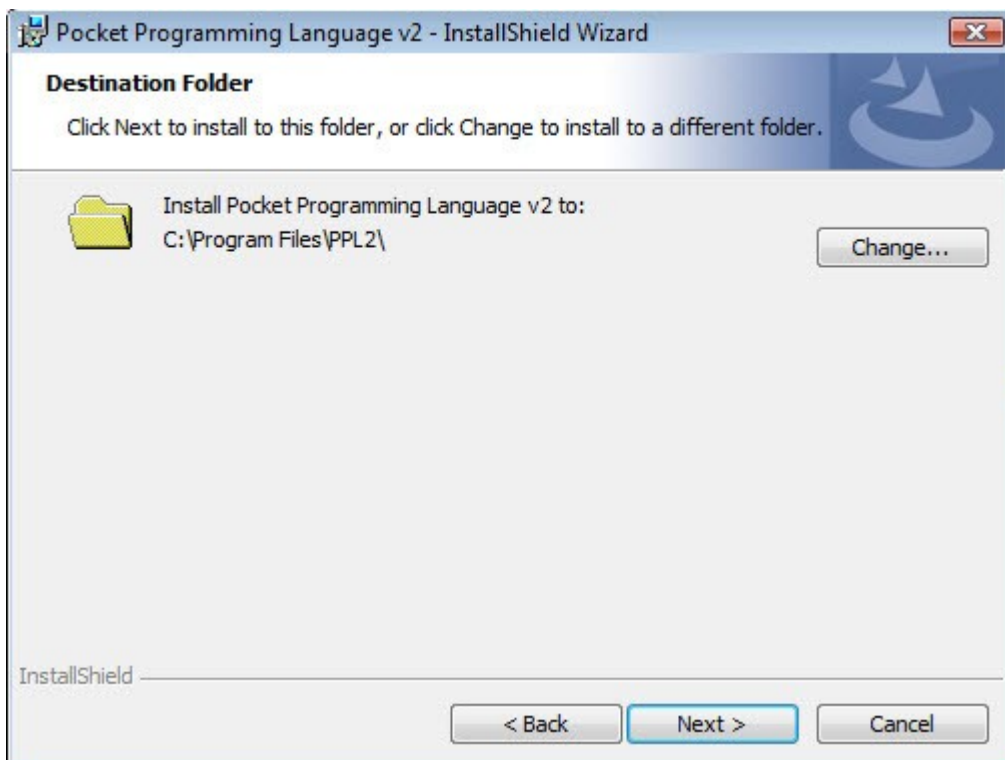
- After all the files have been prepared to install PPL2 to the system, you will be welcomed by the “InstallShield” welcome window. Click the **Next** button to continue through the installation process.



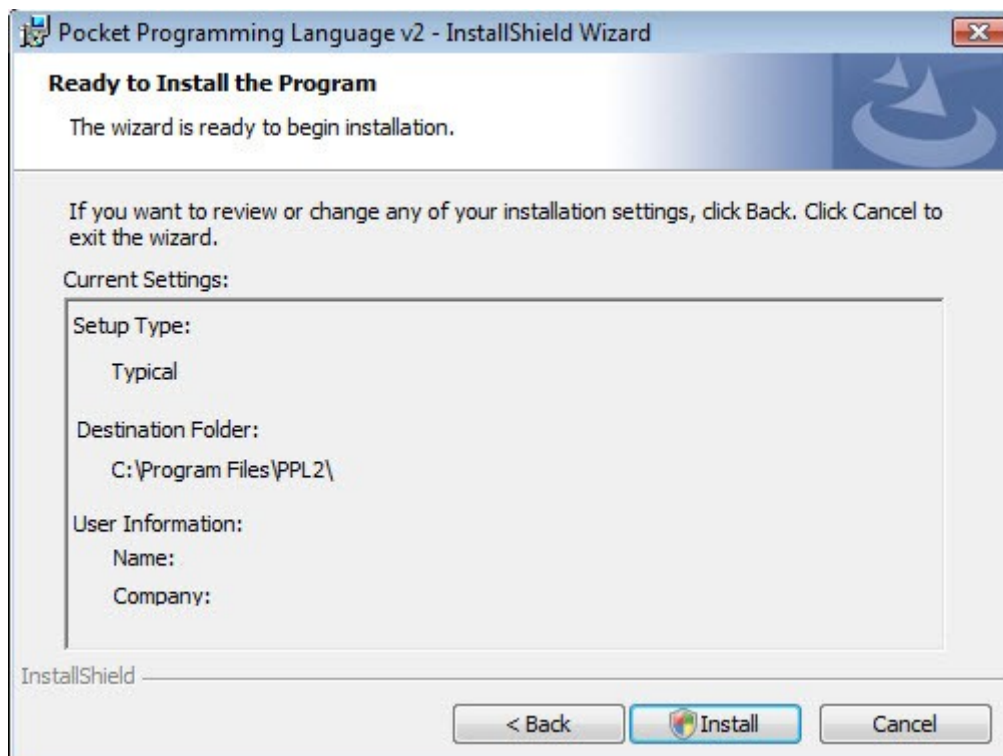
- Select the “I accept...” radio button in the EULA window and hit the **Next** button.



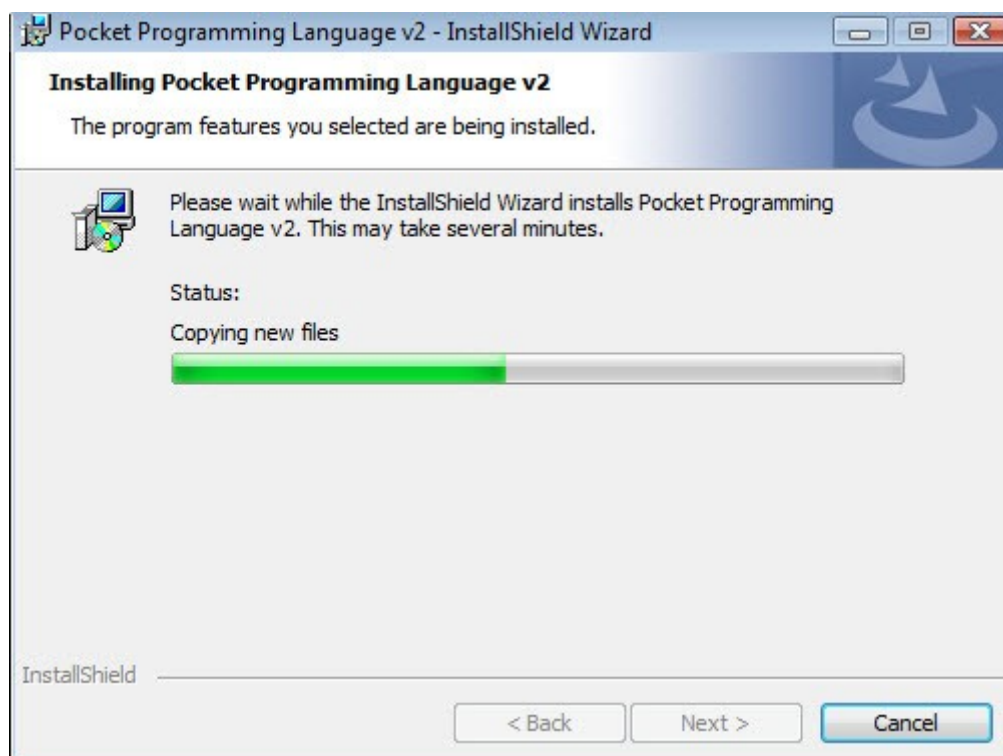
- Select an install directory or just click the **Next** button to install PPL2.

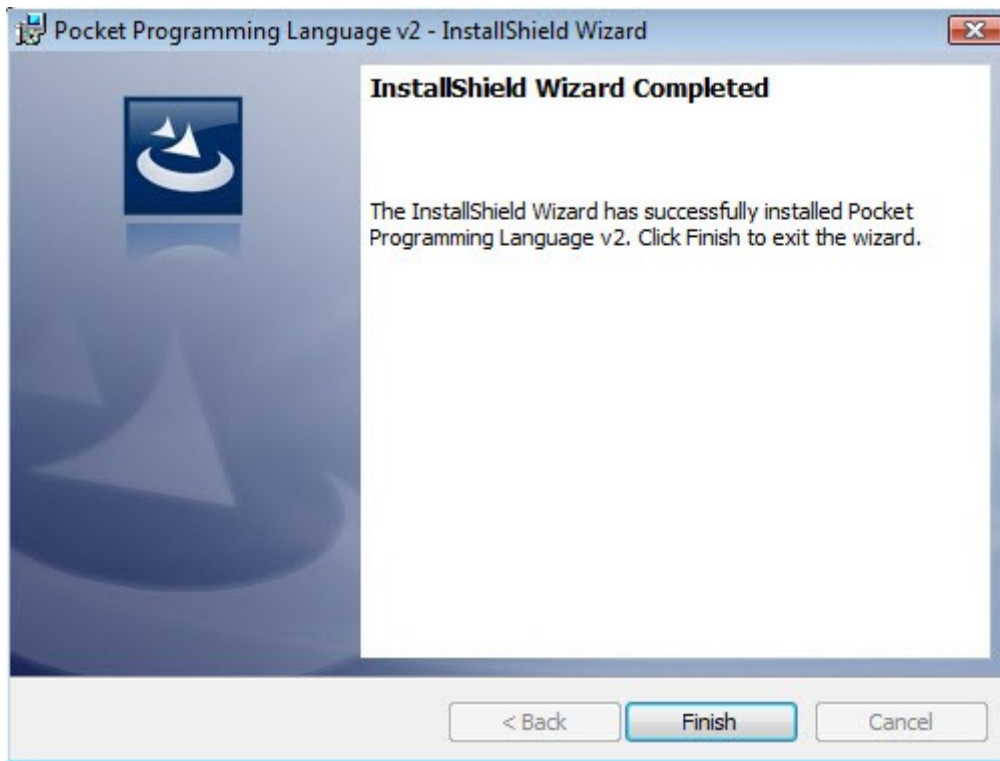


- In the “Ready to install program” window, click the **Install** button to install PPL2 in your computer.

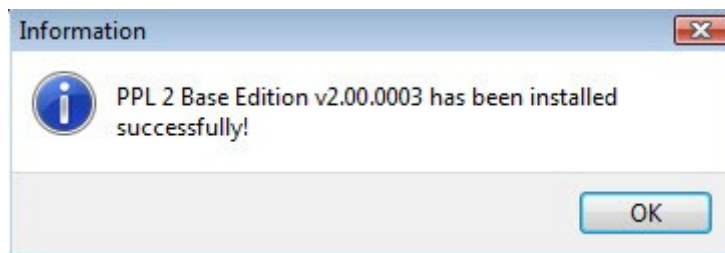


- After all the files are installed, click the Finish button to finish the installation.



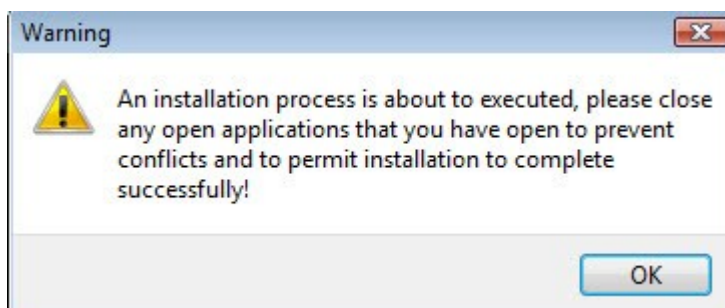


- Hit the **OK** button in the Successful installation alert.



Installing Swril Game Engine

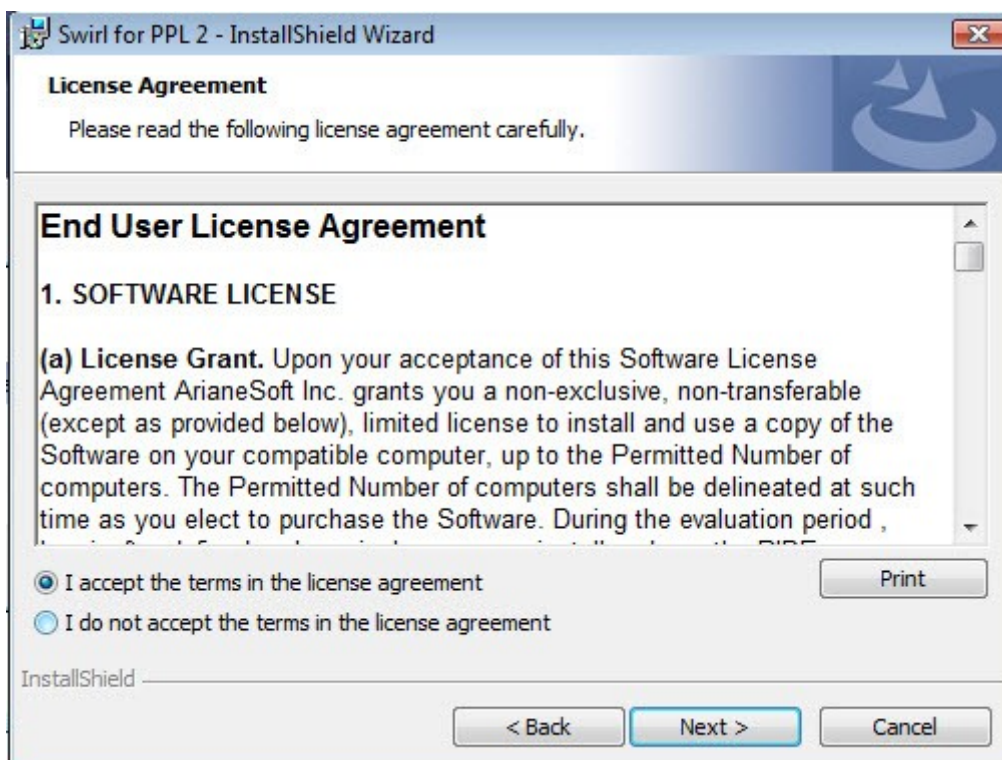
- After Swril Game Engine is downloaded, the system will ask you to close all the applications related to PIDE. Close all such applications and click the **OK** button.



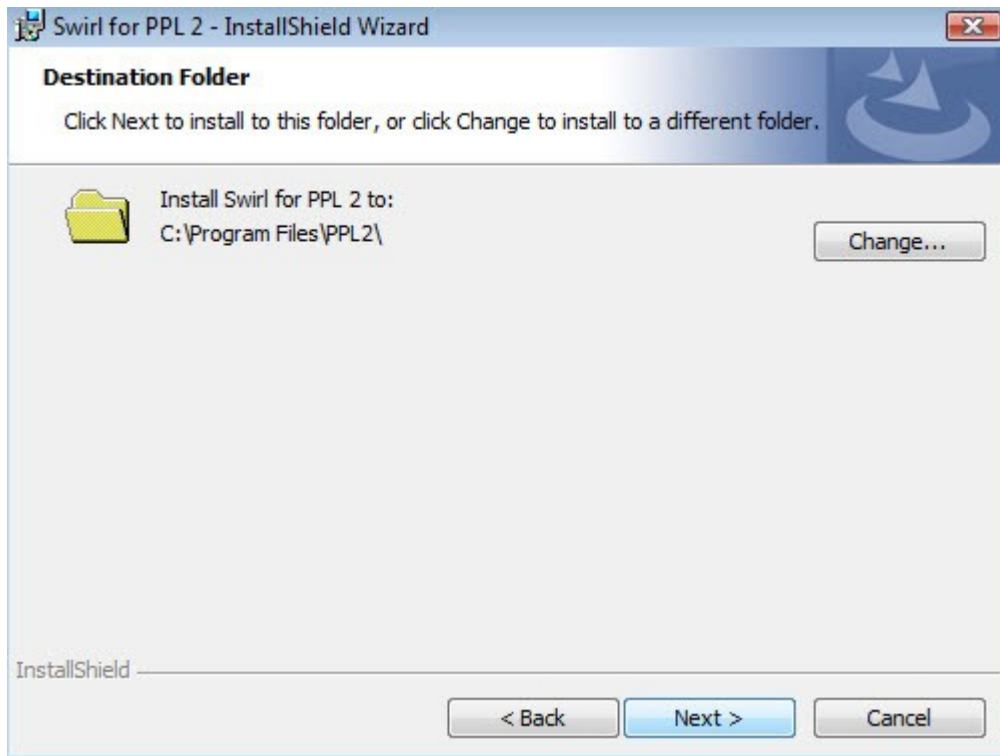
- In the welcome to InstallShield window, click the **Next** button to proceed.



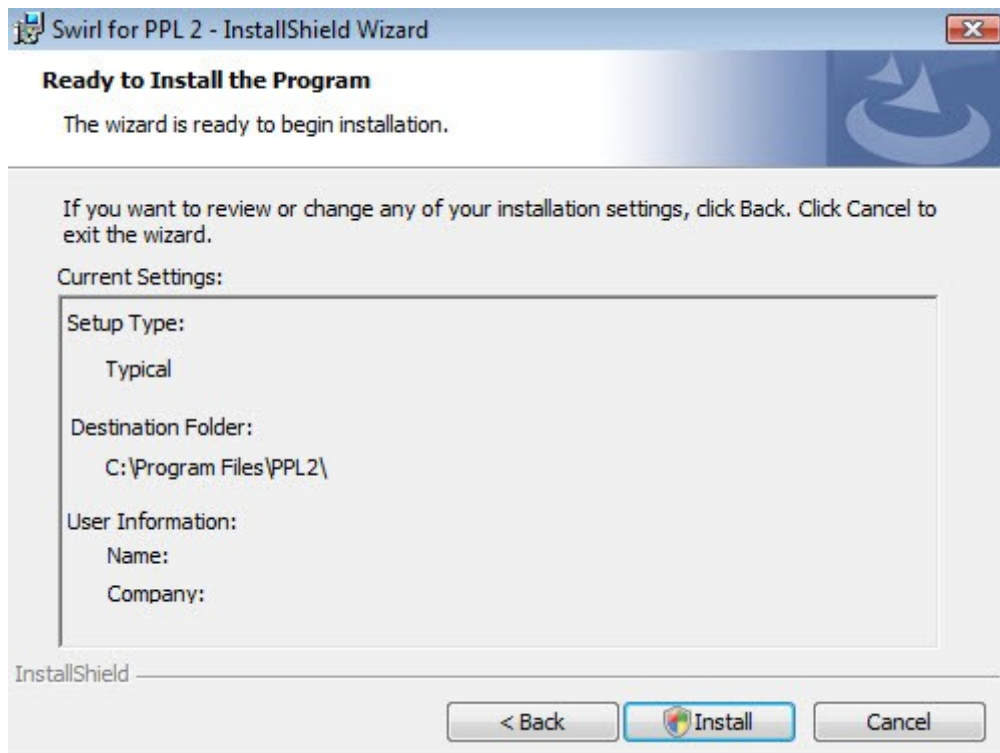
- In the next window, select the “I accept...” radio button in the EULA window and hit the **Next** button.



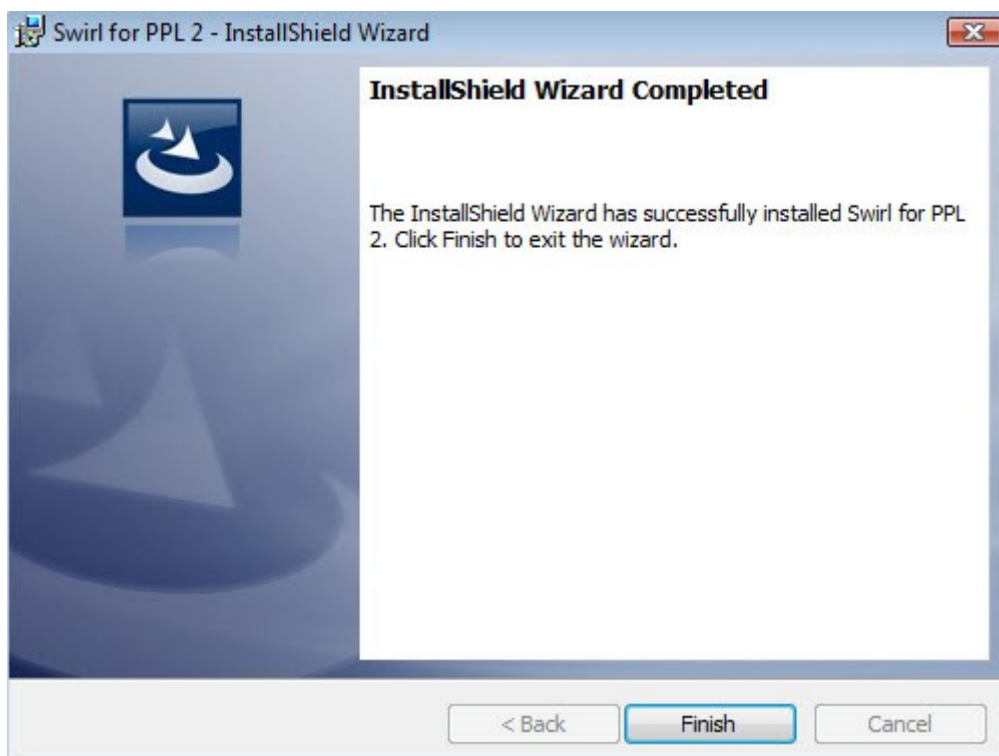
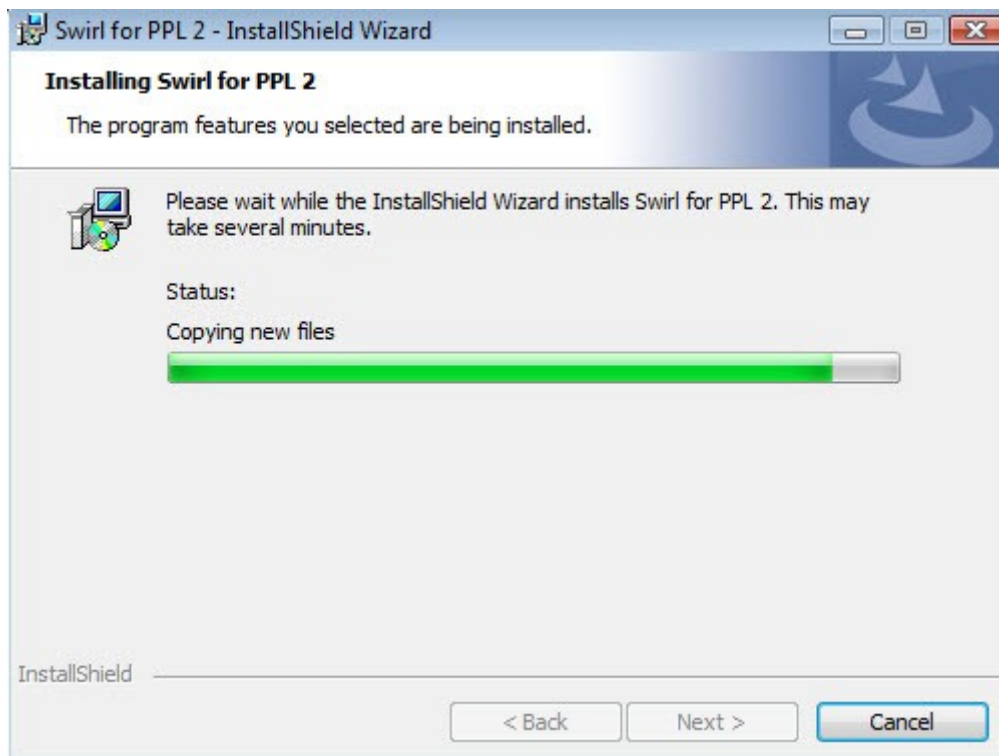
- Select a destination folder and click the **Next** button to continue with the installation.



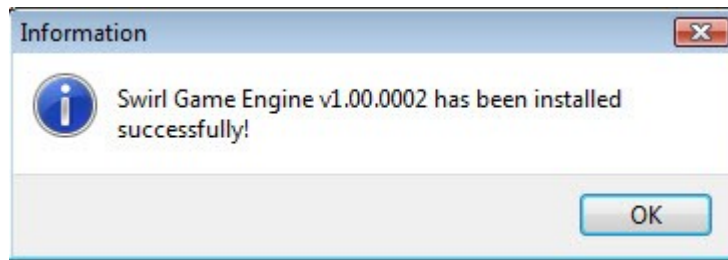
- Confirm all the installation information and click the **Install** button to install Swirl Game Engine.



- After the installation process is completed, click the **Finish** button to complete the installation of Swirl Game Engine.

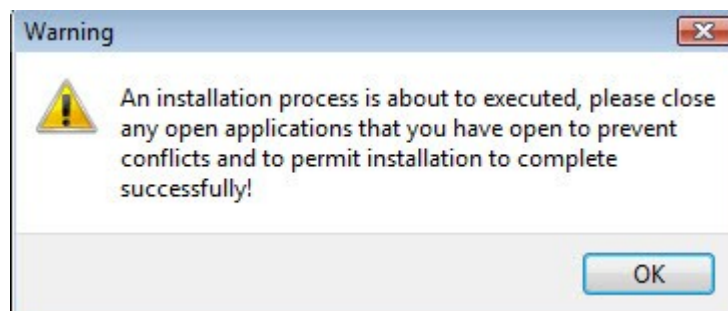


- Click the **OK** button in the next alert that signifies the successful installation of Swirl Game Engine.

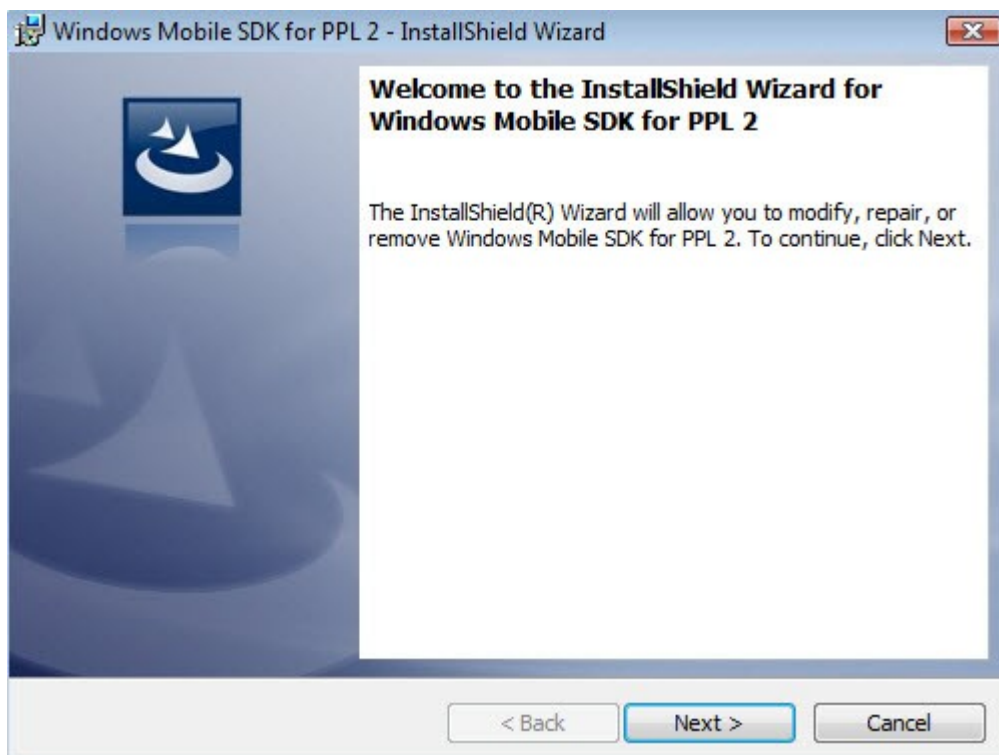


Installing Windows Mobile SDK

- After Windows Mobile SDK is downloaded, the system will alert you with a warning to close all the applications related to PIDE. Close all such applications that can have conflict with windows SDK installation and click the **OK** button.

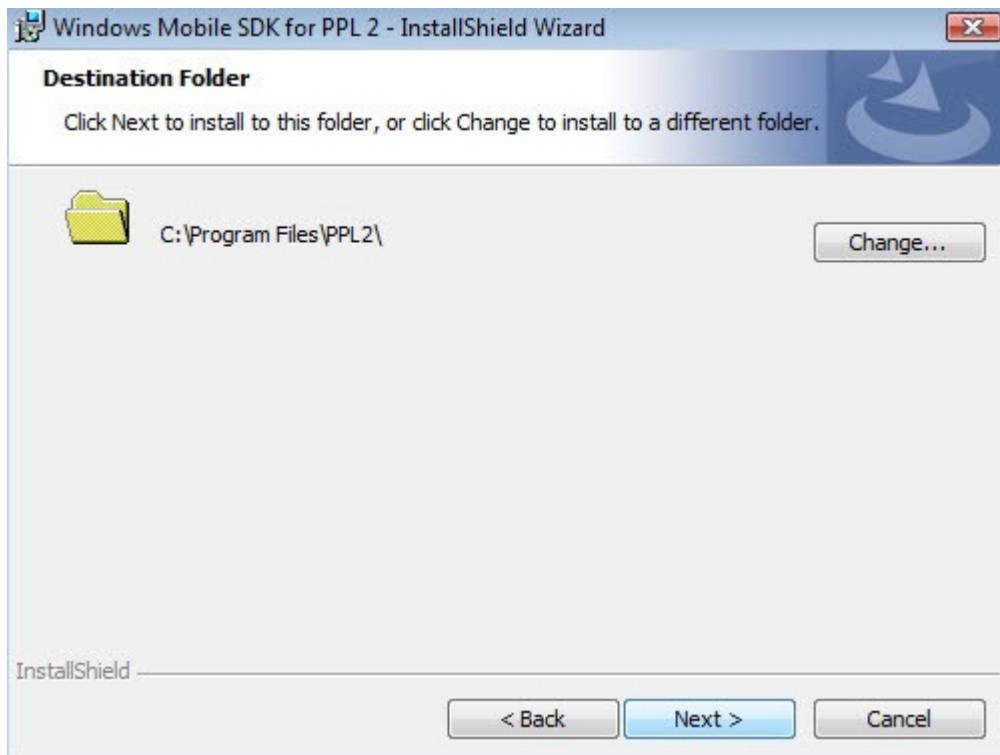


- In the welcome to InstallShield window, click the **Next** button to continue to the next window.

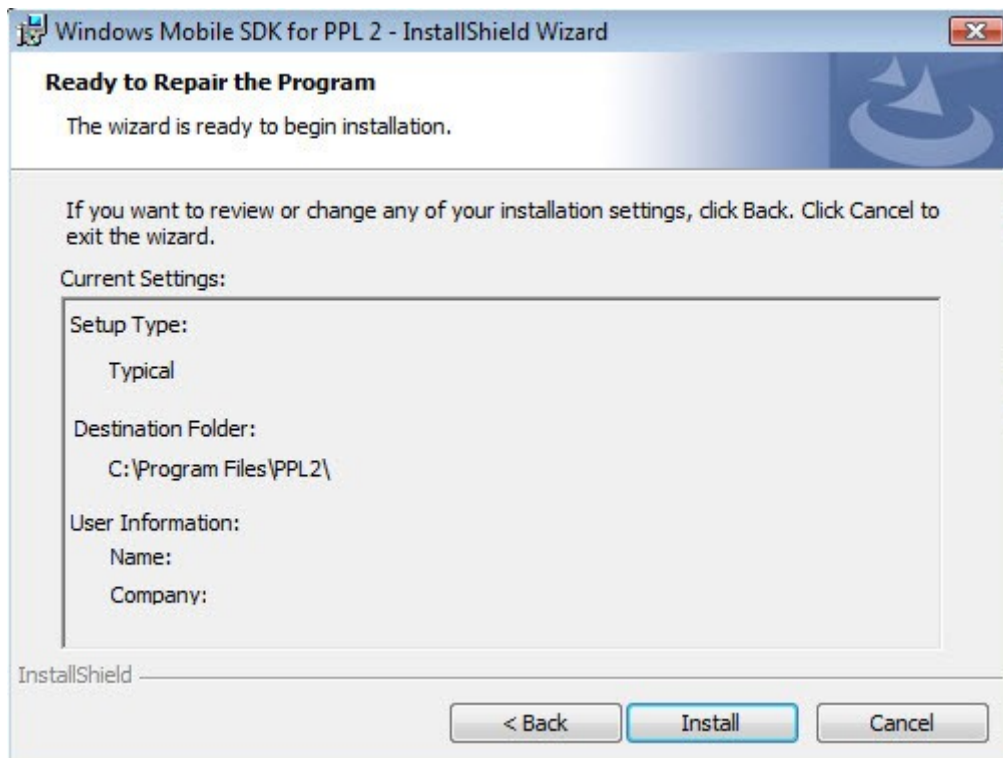


- In the next window, select the "I accept..." radio button in the EULA window and click the **Next** button to proceed.

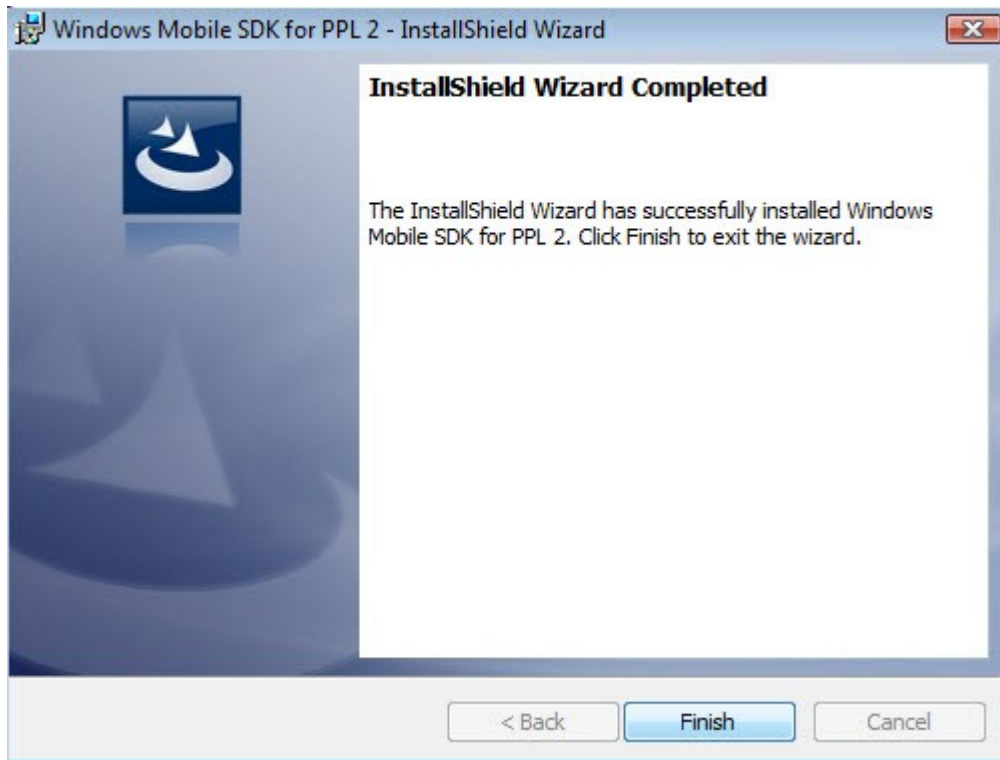
- Select a destination directory and click the **Next** button to continue with the installation of Windows Mobile SDK.



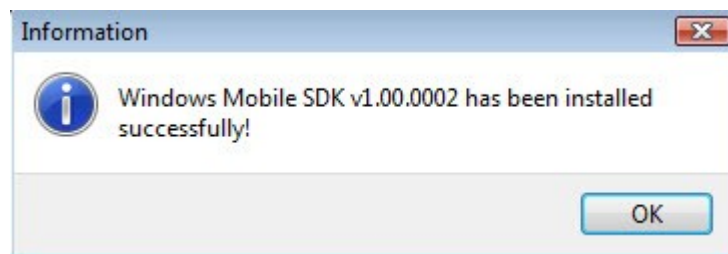
- Confirm all the installation information and click the **Install** button to install Windows Mobile SDK.



- After the installation process is completed, click the **Finish** button to complete the installation of Windows Mobile SDK.



- Click the **OK** button in the next alert that signifies the successful installation of Windows Mobile SDK.



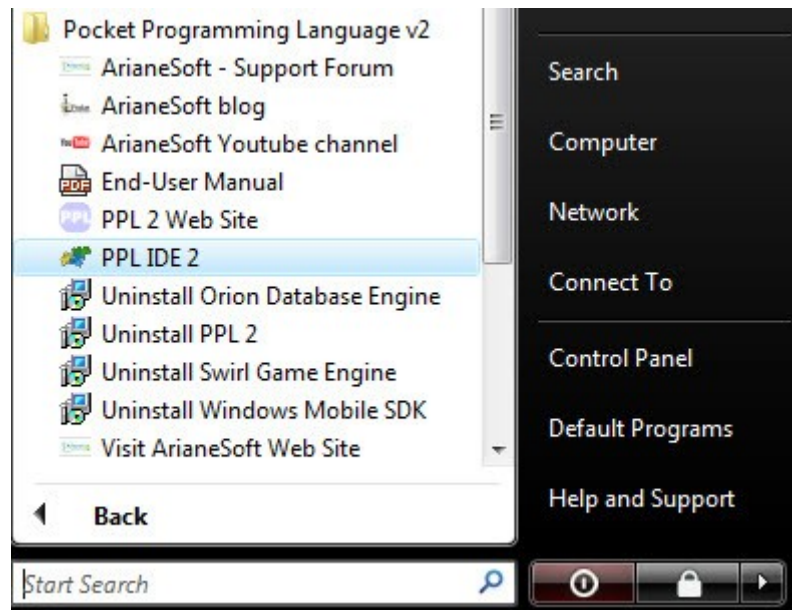
PIDE2 and all other necessary products have been successfully installed and we are now ready to configure PIDE for our first use!

Setting Up PIDE2 For First Time

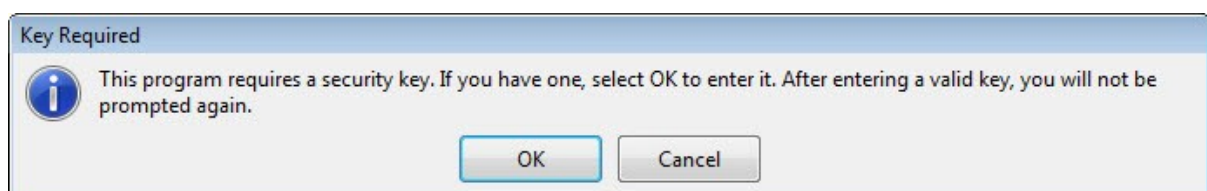
After installing PIDE for the first time, there are some things you will need to do to ensure the proper functioning of the application.

Follow the given guidelines for configuring PIDE2 for the first use:

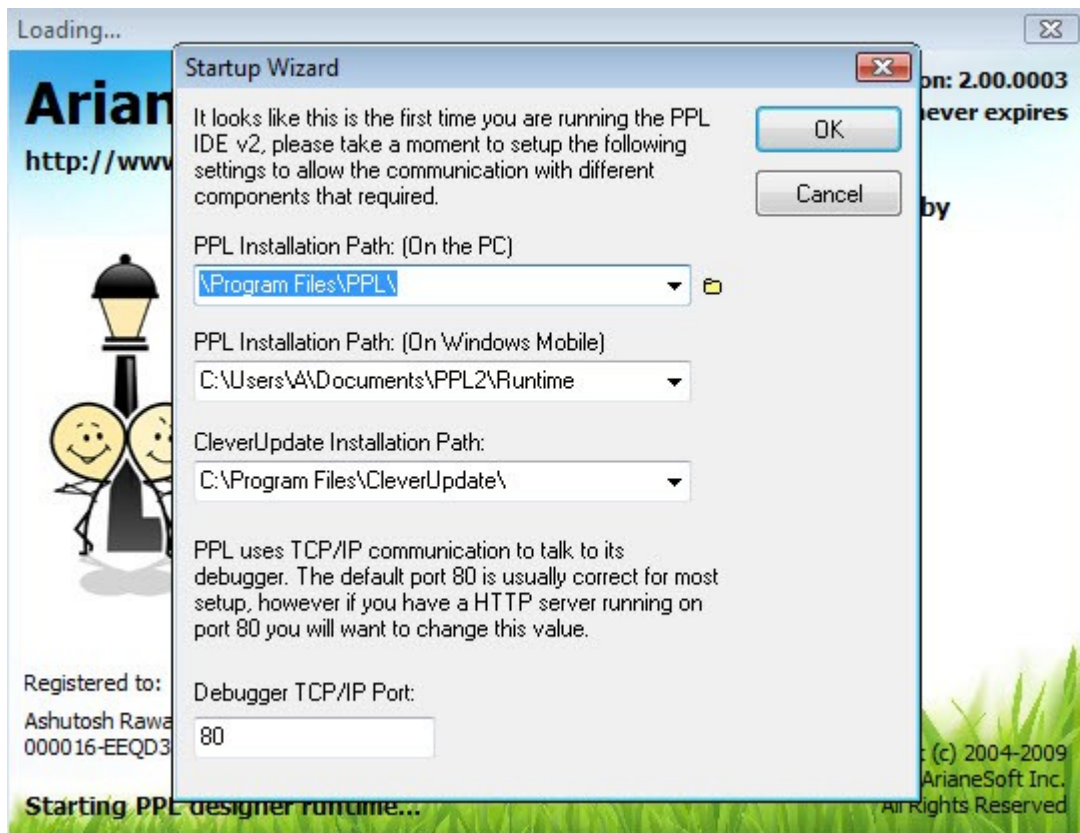
- Open PIDE2 from the start menu in the windows operating system by clicking PPL IDE2.



- If you are logging to the PIDE IDE, it will ask you for the PIDE Key to access PIDE. Click the **OK** button and enter the key and your name you used with the installation. A valid key will give you a successful message.



- When PIDE IDE is opened for the first time, it initializes the startup wizard that guides about the important preferences a user needs to set in order to use PIDE2 optimally.



- The initial setup comes with three options namely, PPL installation path on PC, PPL installation path on Windows Mobile, CleverUpdate Installation path and Debugger TCP/IP port number.
- While you may not feel it necessary to tweak the first three settings that are self explanatory, setting the **Debugger TCP/IP port** is an important point. If you are a user who will use a web server on his/her local machine, you should avoid using the port 80 as it can have conflicts with the services running on your web server. Instead of using port 80, users are advised to choose any port above 1000 to guarantee good compatibility with PIDE.
- After changing the debugger TCP/IP port, click the **OK** button to apply changes to PIDE IDE.

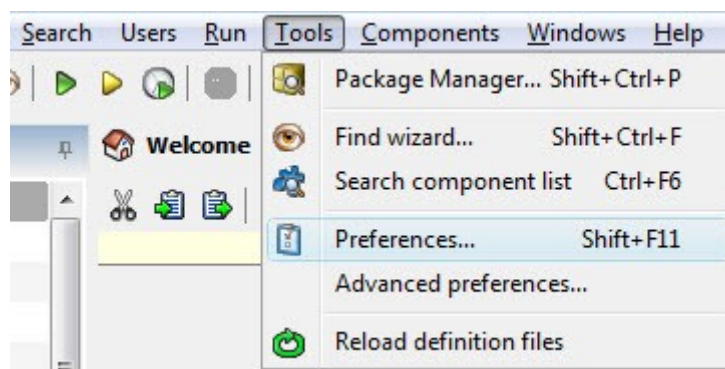
Users can also set other preferences in PIDE from the Preferences section of the Tools menu of PIDE2. That's it! We have configured PIDE2 for the first use.

Supported File Types in Code Editor

The preference properties of PIDE allow a user to change a lot of settings according to his/her preferences. Changing the supported file types for the editor will allow us to set file types that are opened in the code editor by default. By including or removing file types in the edit window, users can easily specify the files that will be opened in the code editor of PIDE2.

For creating a list of supported file types that would automatically open in the code editor of PIDE:

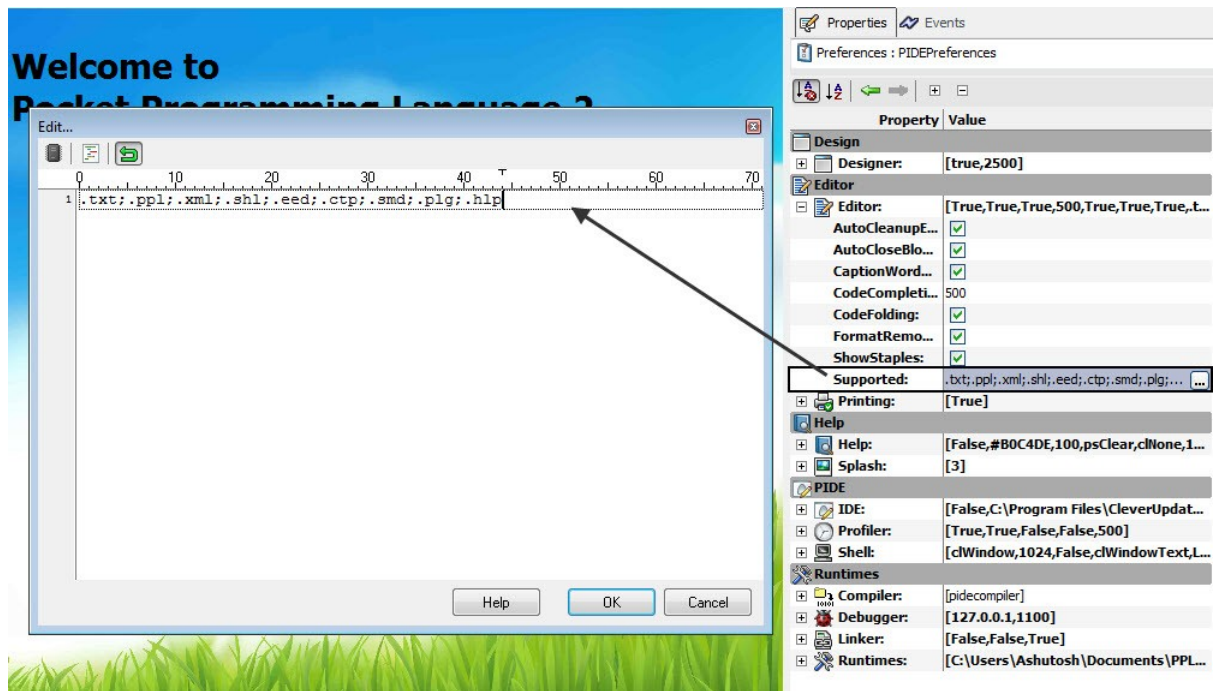
- Select Tools menu → Preferences. This will open the preferences section in the properties panel. Alternatively, users can also press **Shift+F11** key.



- Expand the **Editor** section to see **Supported** property.
- Double click the Supported property and add any file type that you want to open in PIDE2's code editor by default. For doing this, click the area in the **Edit** window where file extensions are written and write a file extension. Remember to use the semicolon as a delimiter.

Deleting a file extension here will no longer support the file type in the code editor. Although performing all such manipulations in PIDE is a simple task, users are advised not to add/delete values from the **Supported** files section unless they are absolutely sure of it.

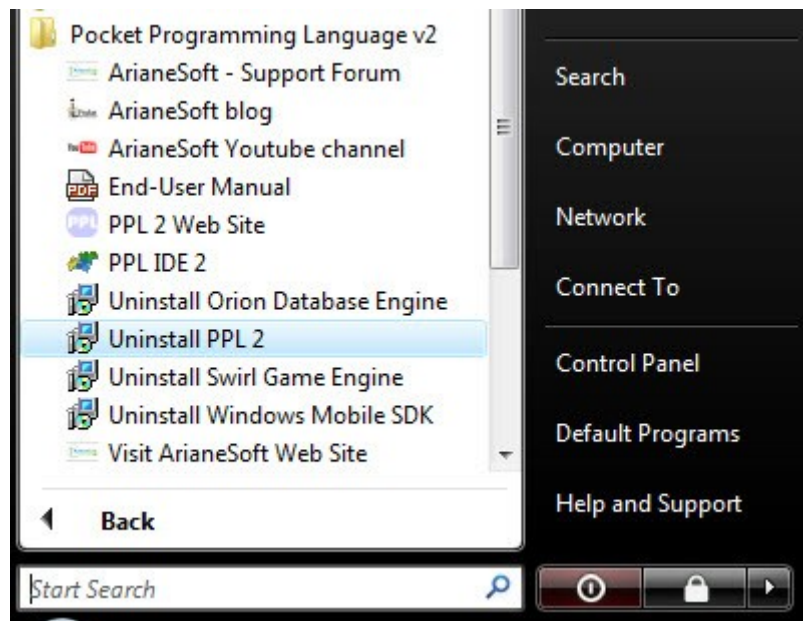
- Click the **OK** button to save the changes. Now, all the file extensions written in **Supported** file section will open in the code editor.



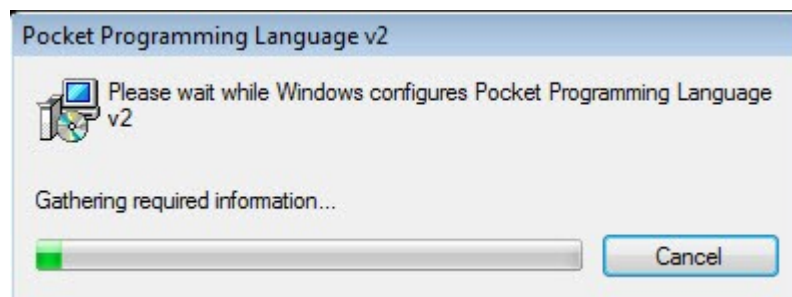
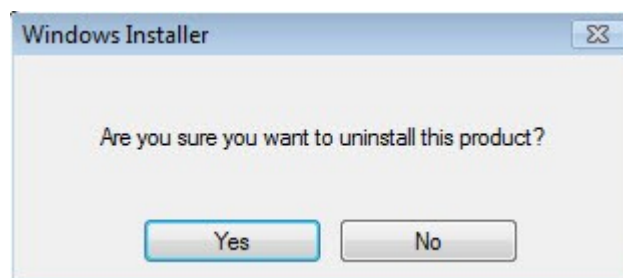
Uninstalling PIDE2

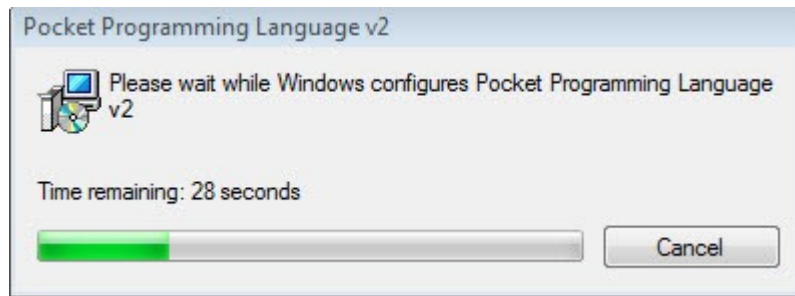
Just like the easy installation, the process of uninstalling is also made very easy with PIDE2. Follow the given steps for uninstalling PIDE2 from your system:

- Go to the Start menu and select Uninstall PPL2 in under the Pocket Programming Language V2 menu.



- After asking you if you really want to remove PIDE2, windows starts to gather all the information required for uninstalling PIDE2 from your system and continues automatically with the uninstall process.





Alternatively, users can also use the Add and remove programs tool in the Control panel to uninstall PIDE2.